

# SAMR: A Contextualized Introduction

---

Ruben R. Puentedura, Ph.D.

## Transformation

### **Redefinition**

*Tech allows for the creation of new tasks,  
previously inconceivable*

### **Modification**

*Tech allows for significant task redesign*

---

### **Augmentation**

*Tech acts as a direct tool substitute, with  
functional improvement*

### **Substitution**

*Tech acts as a direct tool substitute, with no  
functional change*

## Enhancement

## Redefinition

*Tech allows for the creation of new tasks, previously inconceivable*

## Modification

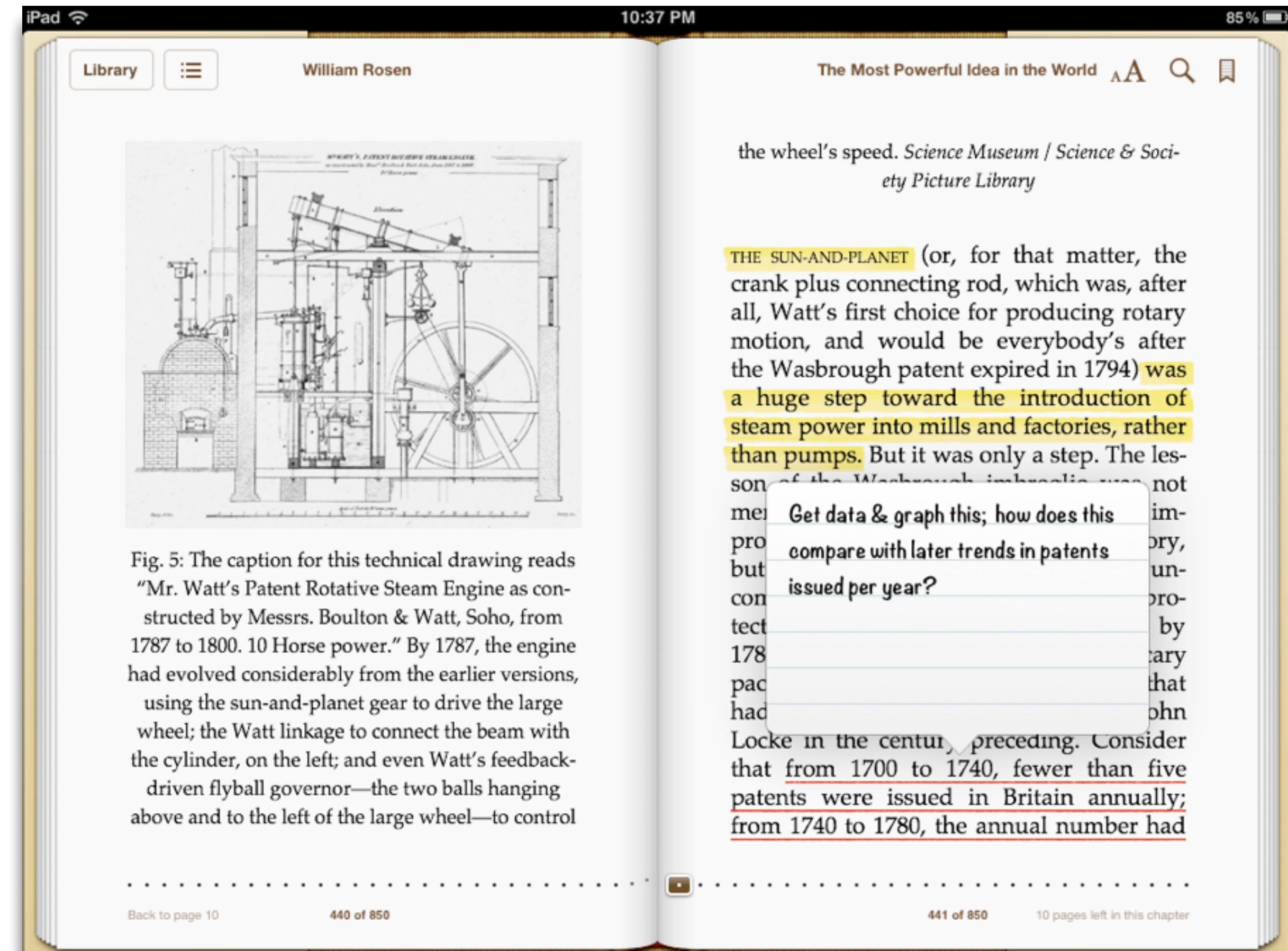
*Tech allows for significant task redesign*

## Augmentation

*Tech acts as a direct tool substitute, with functional improvement*

## Substitution

*Tech acts as a direct tool substitute, with no functional change*



## Redefinition

*Tech allows for the creation of new tasks, previously inconceivable*

## Modification

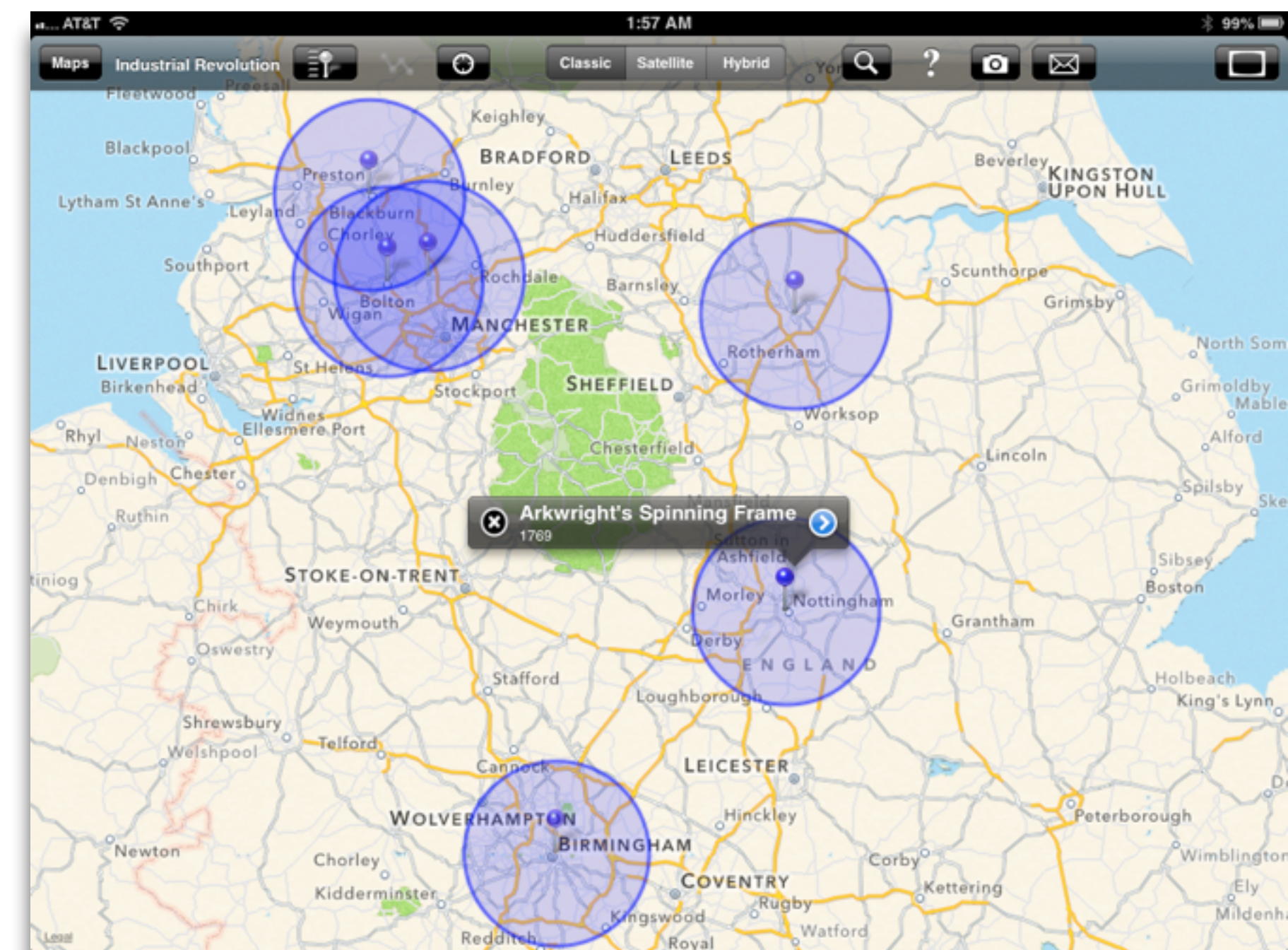
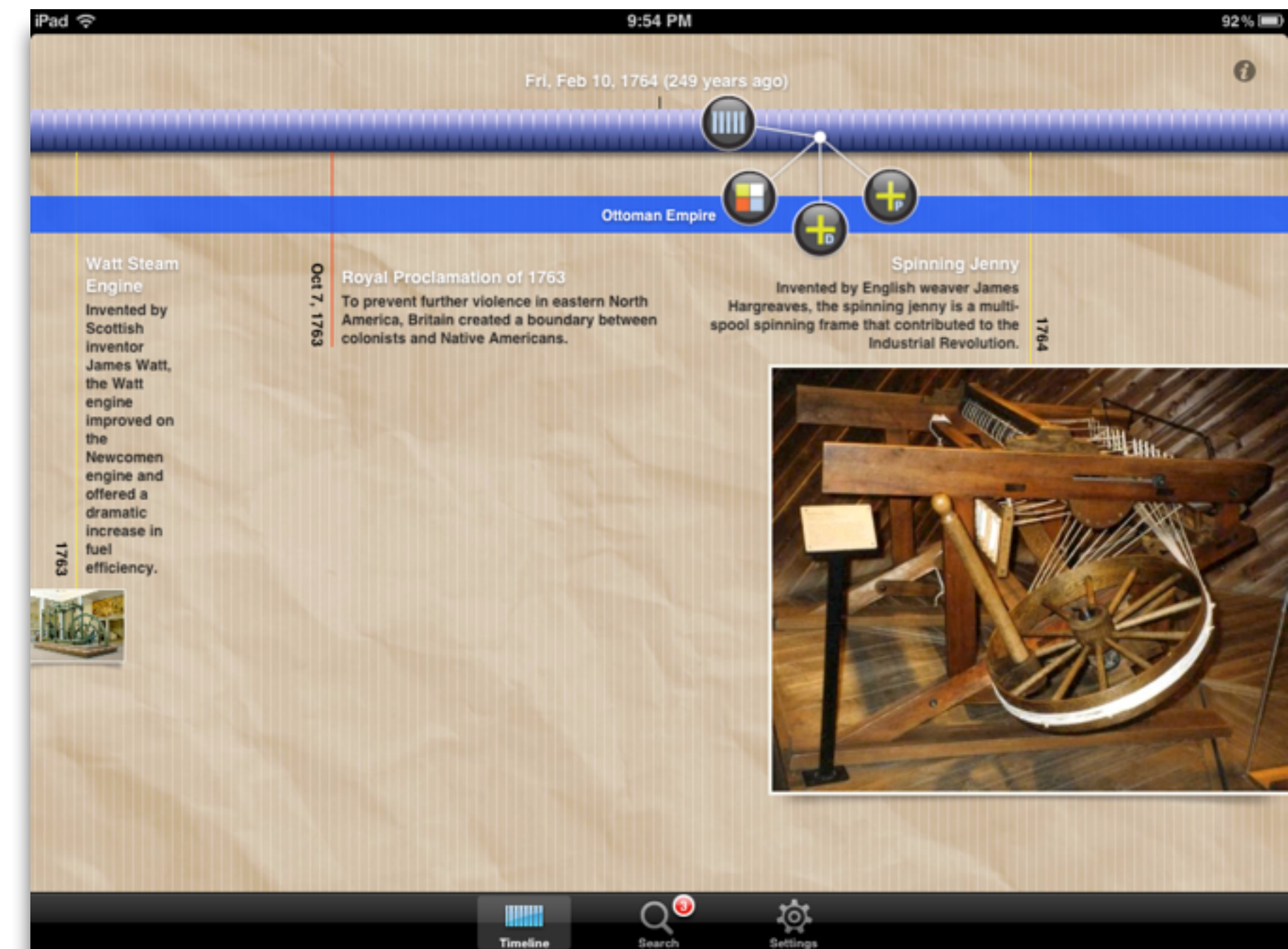
*Tech allows for significant task redesign*

## Augmentation

*Tech acts as a direct tool substitute, with functional improvement*

## Substitution

*Tech acts as a direct tool substitute, with no functional change*



## Redefinition

*Tech allows for the creation of new tasks, previously inconceivable*

## Modification

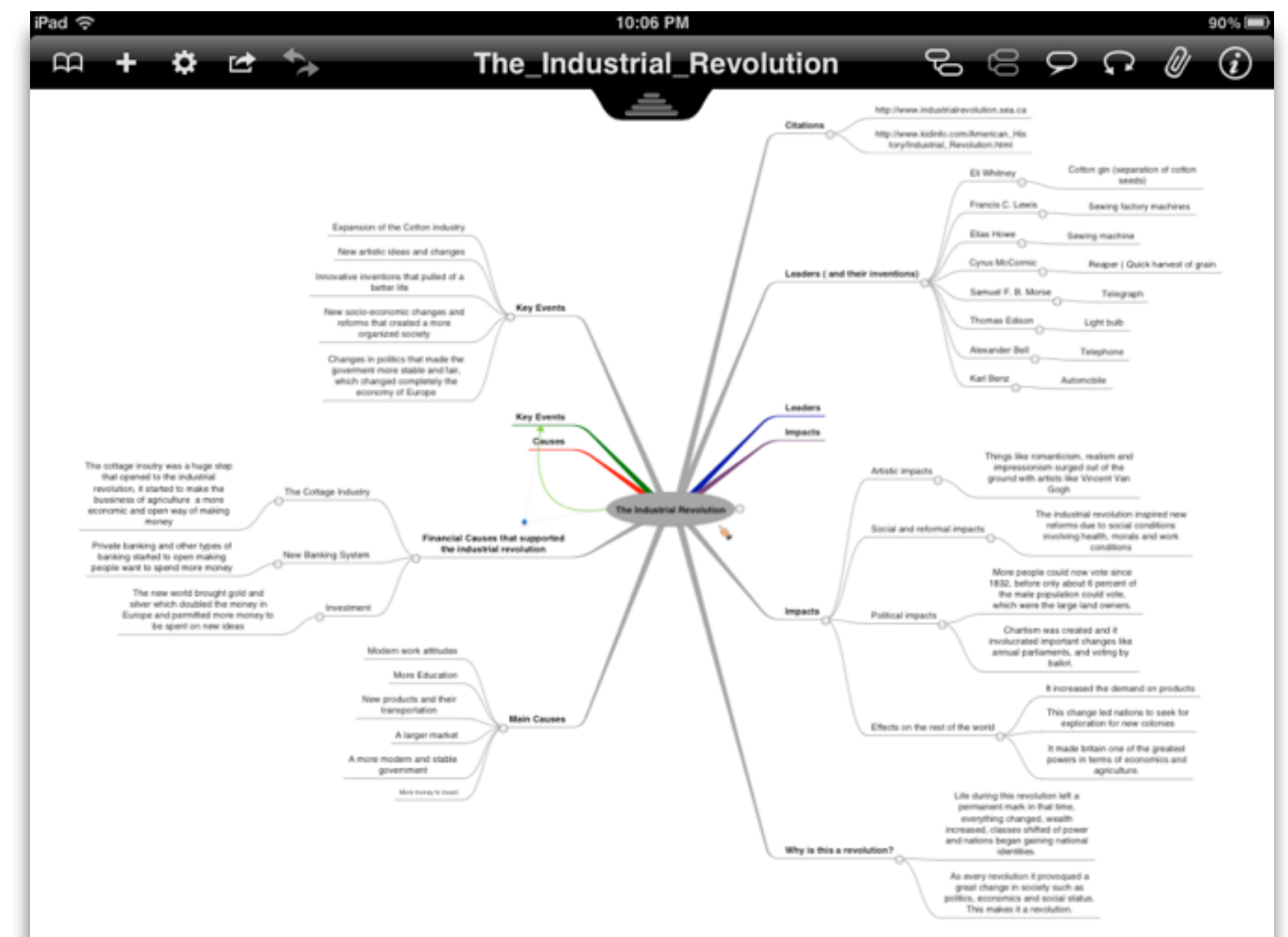
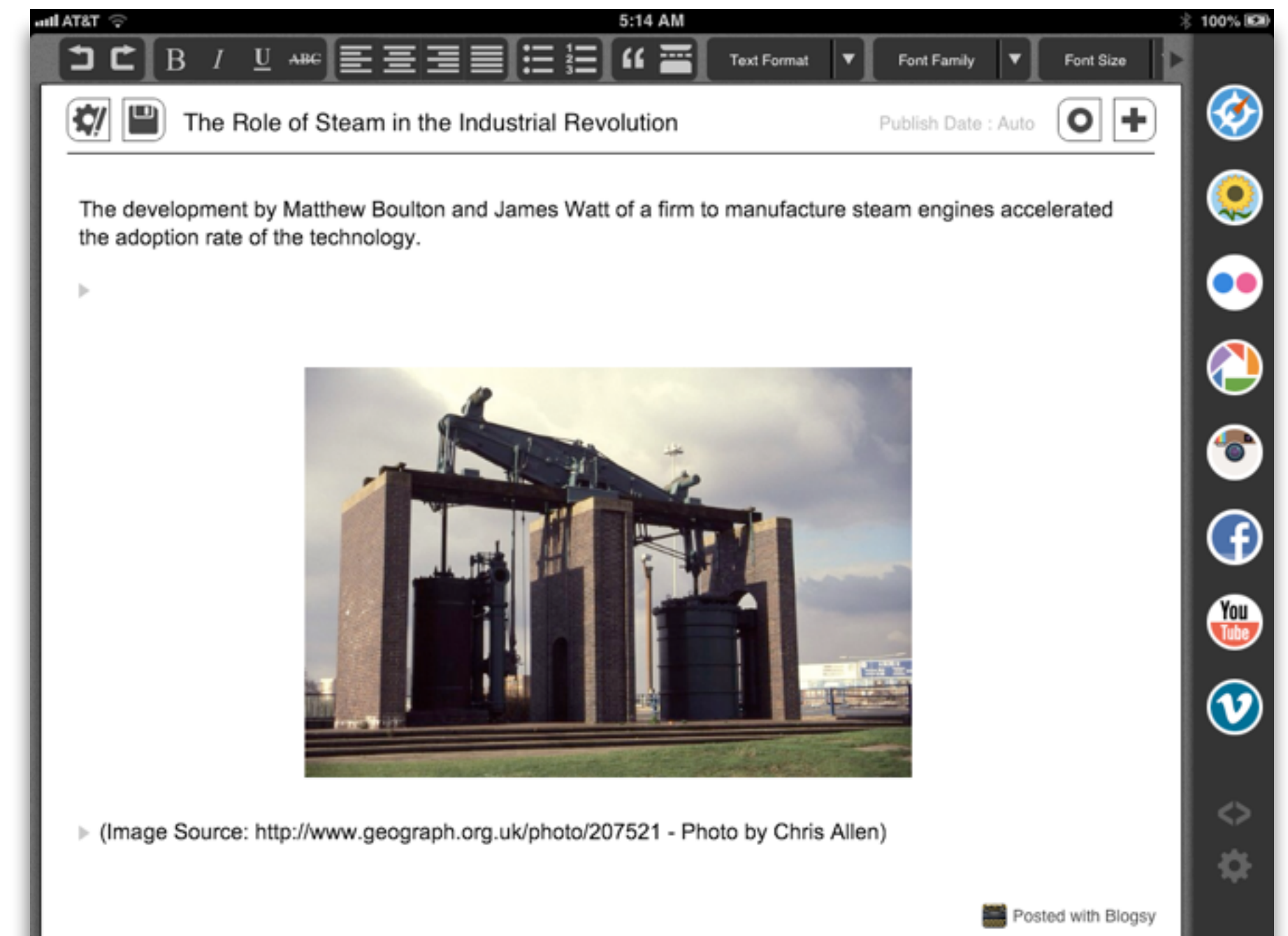
*Tech allows for significant task redesign*

## Augmentation

*Tech acts as a direct tool substitute, with functional improvement*

## Substitution

*Tech acts as a direct tool substitute, with no functional change*



# Redefinition

Tech allows for the creation of new tasks, previously inconceivable

# Modification

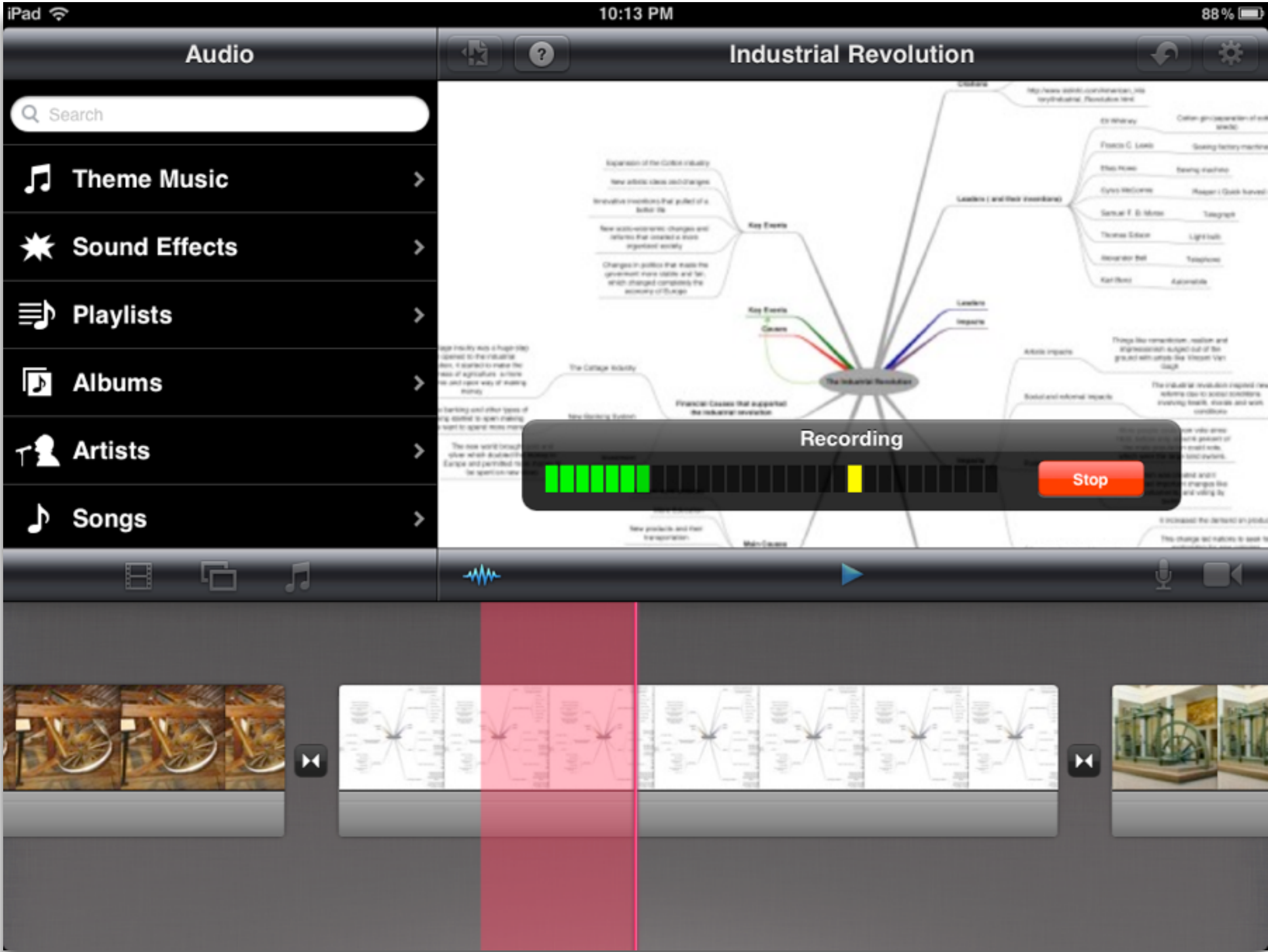
Tech allows for significant task redesign

# Augmentation

Tech acts as a direct tool substitute, with functional improvement

# Substitution

Tech acts as a direct tool substitute, with no functional change



**Transformation**

**Redefinition**

*Tech allows for the creation of new tasks,  
previously inconceivable*

**Modification**

*Tech allows for significant task redesign*




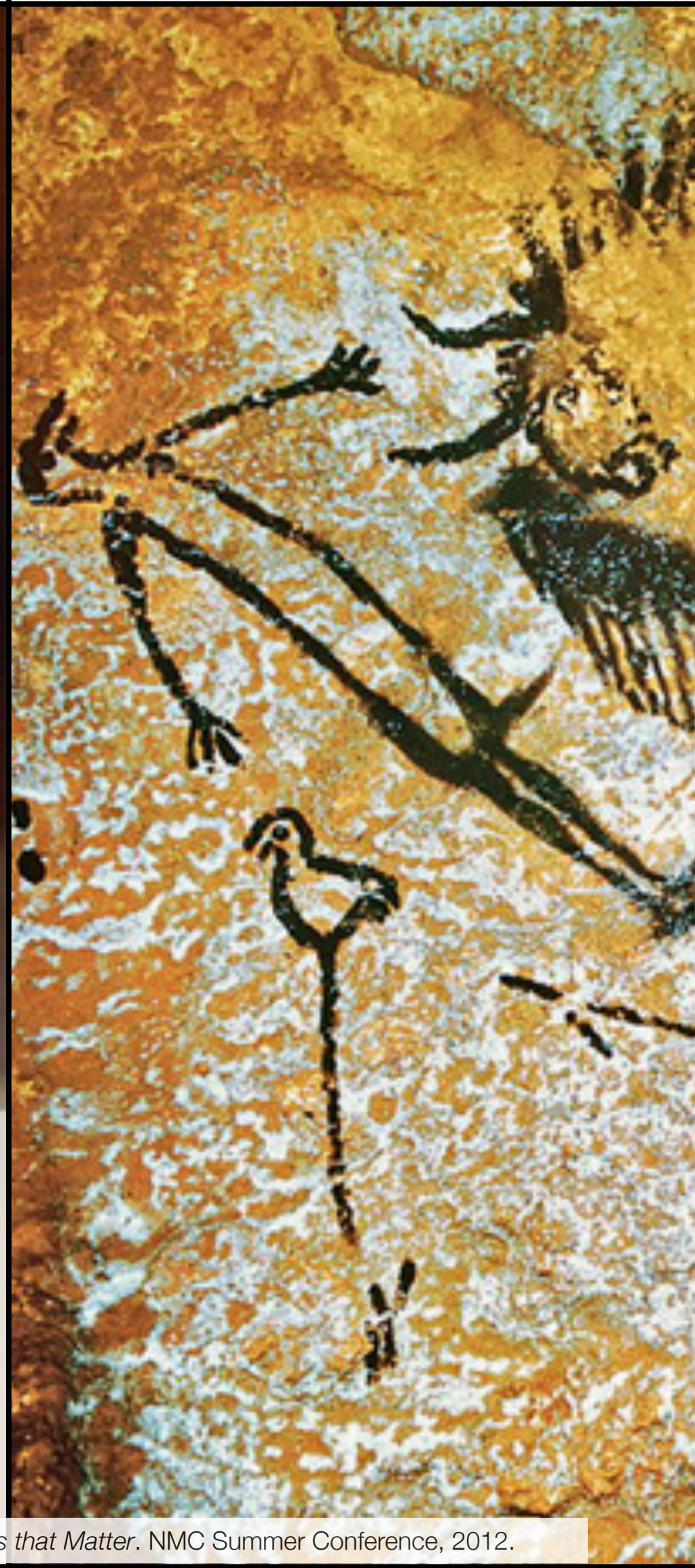

**Augmentation**

*Tech acts as a direct tool substitute, with  
functional improvement*

**Substitution**

*Tech acts as a direct tool substitute, with no  
functional change*

**Enhancement**

Social	Mobility	Visualization	Storytelling	Gaming
200,000 years	70,000 years	40,000 years	17,000 years	8,000 years
				

# Search Sites

---

- **The Basics:**

- Google
- Bing
- blekko
- Wikipedia

- **Subject Directories:**

- ipl2
- INFOMINE

- **Specialized Focus:**

- Google Scholar
- Google Books

- **Media Search:**

- Flickr
- YouTube

- **Data Search:**

- Wolfram Alpha

- **OER Resources:**

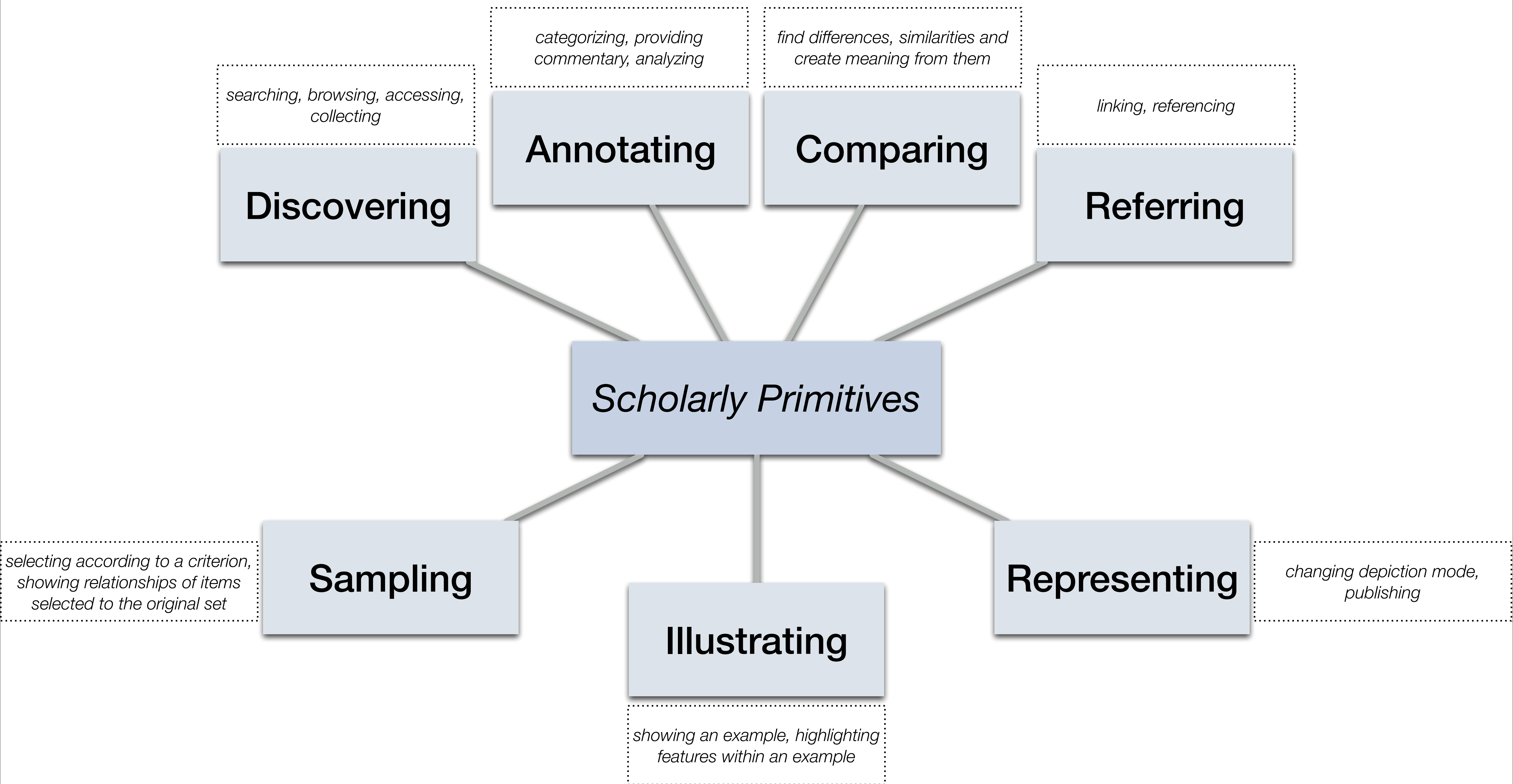
- OER Commons
- OpenCourseWare Consortium

- **Crowdsourcing:**

- Delicious
- Diigo
- Twitter
- Quora

- **Professional Organizations:**

- Hastac
- NCTE
- NCTM
- NSTA
- NCSS



## Redefinition

*Tech allows for the creation of new tasks, previously inconceivable*

## Modification

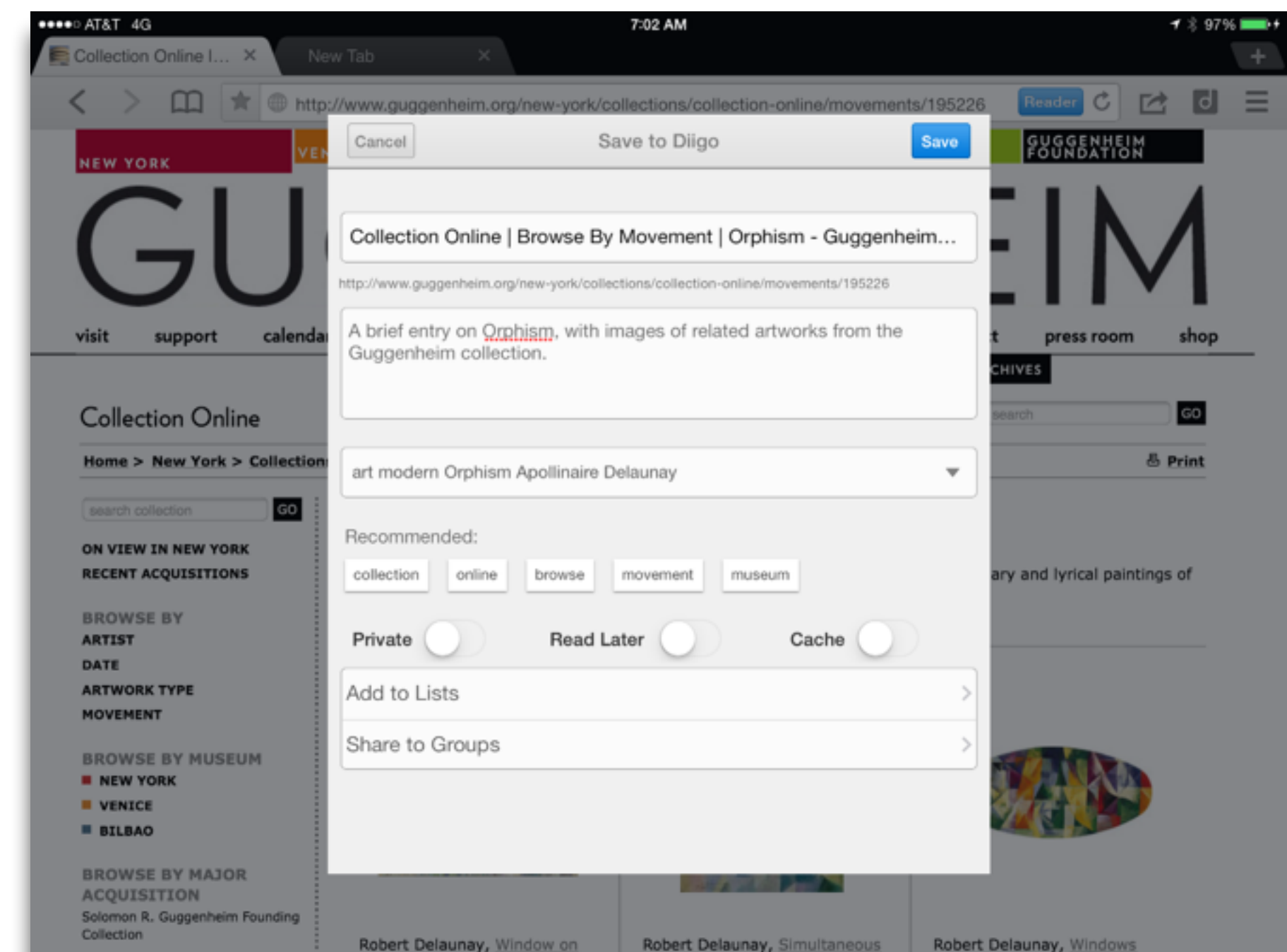
*Tech allows for significant task redesign*

## Augmentation

*Tech acts as a direct tool substitute, with functional improvement*

## Substitution

*Tech acts as a direct tool substitute, with no functional change*



## Redefinition

*Tech allows for the creation of new tasks, previously inconceivable*

## Modification

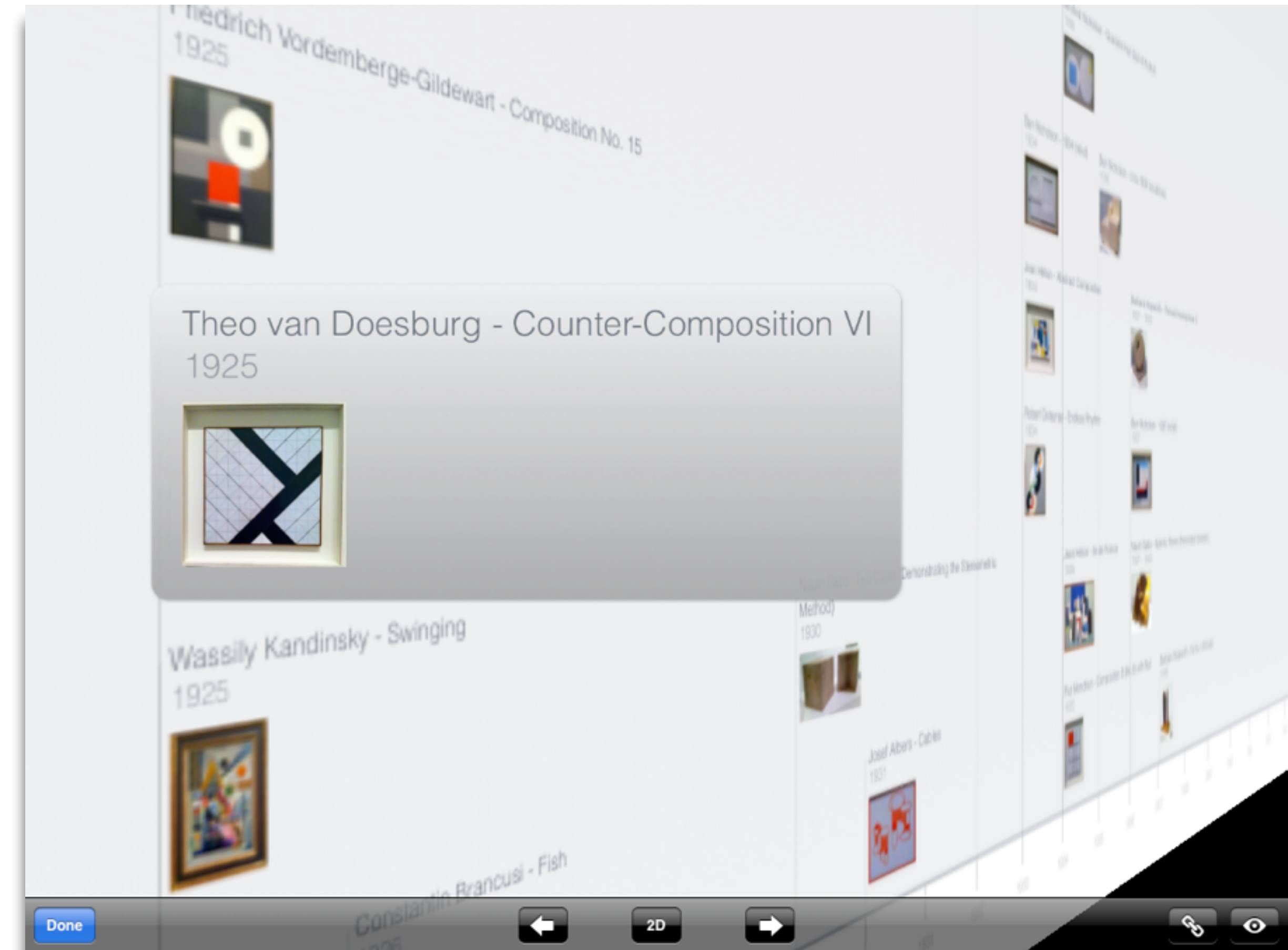
*Tech allows for significant task redesign*

## Augmentation

*Tech acts as a direct tool substitute, with functional improvement*

## Substitution

*Tech acts as a direct tool substitute, with no functional change*



## Redefinition

*Tech allows for the creation of new tasks, previously inconceivable*

## Modification

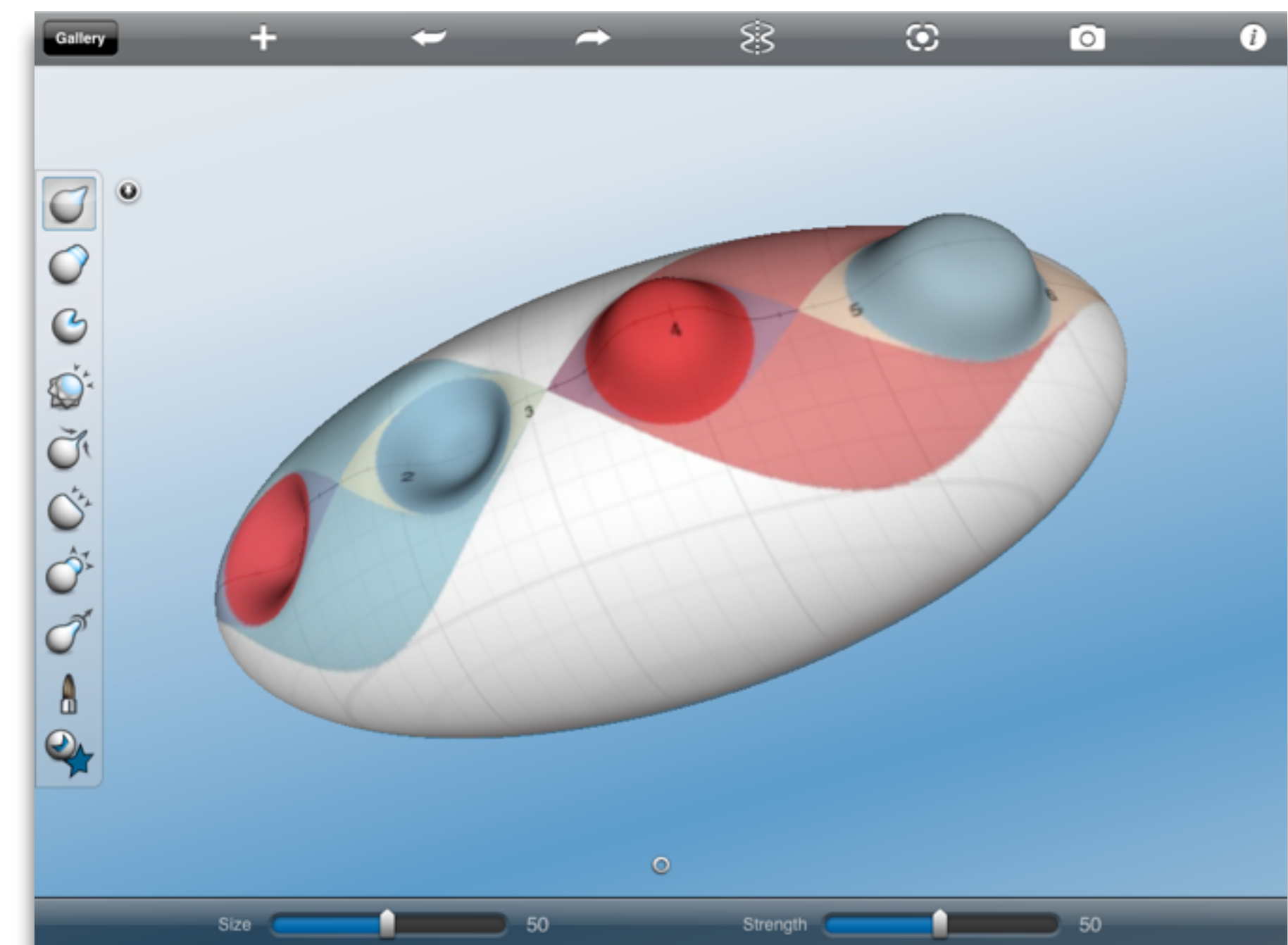
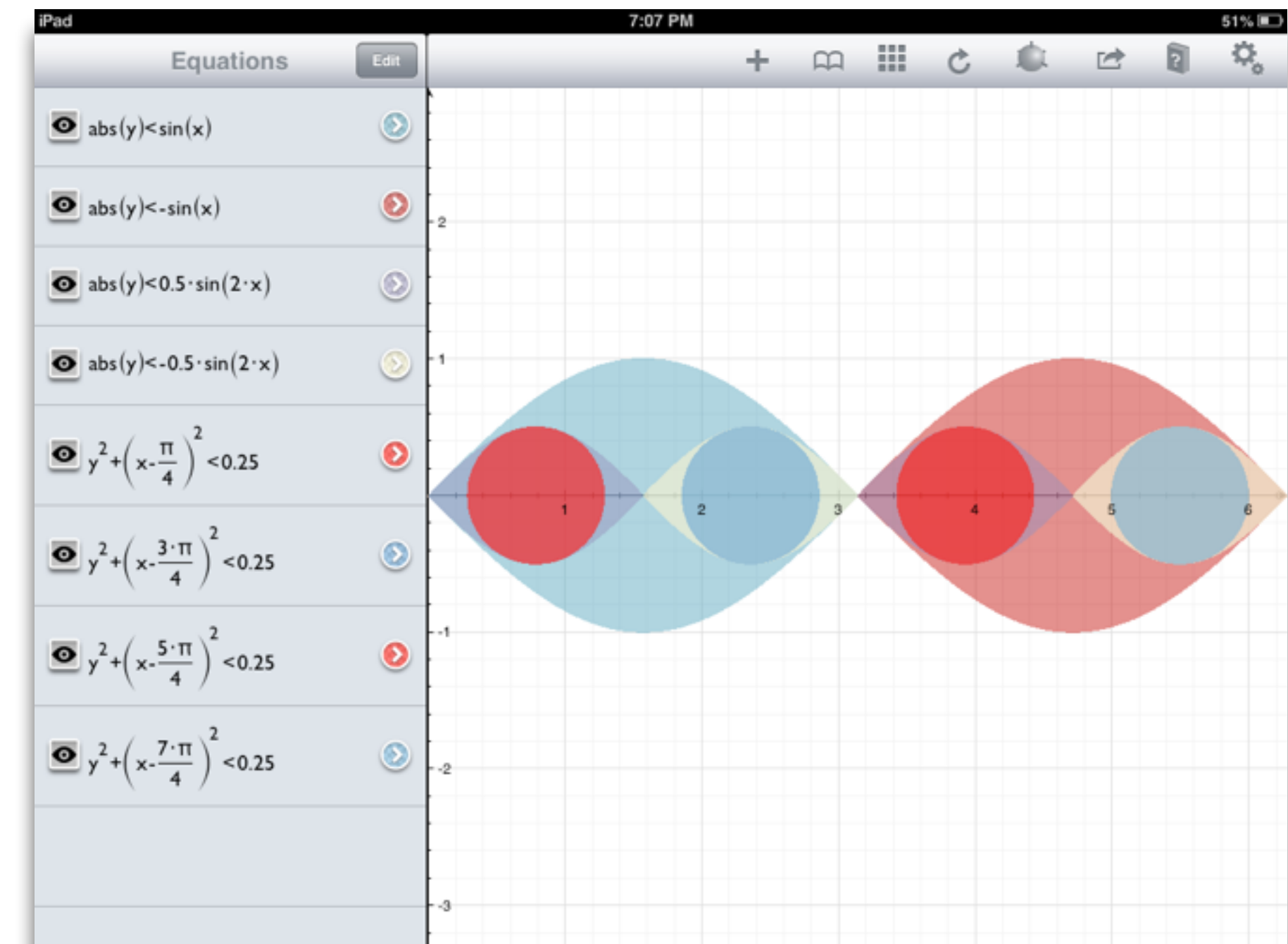
*Tech allows for significant task redesign*

## Augmentation

*Tech acts as a direct tool substitute, with functional improvement*

## Substitution

*Tech acts as a direct tool substitute, with no functional change*



## Redefinition

*Tech allows for the creation of new tasks, previously inconceivable*

## Modification

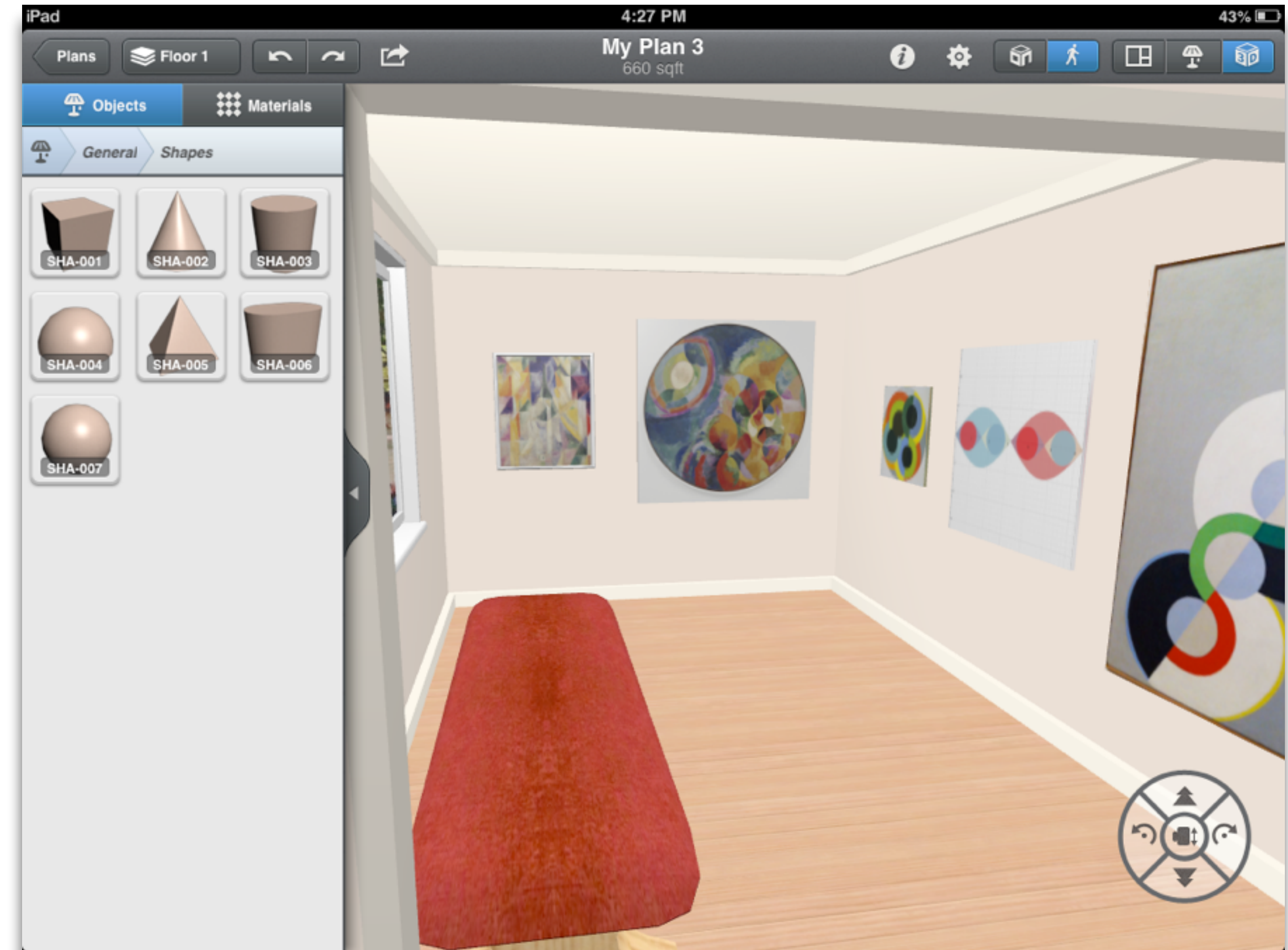
*Tech allows for significant task redesign*

## Augmentation

*Tech acts as a direct tool substitute, with functional improvement*

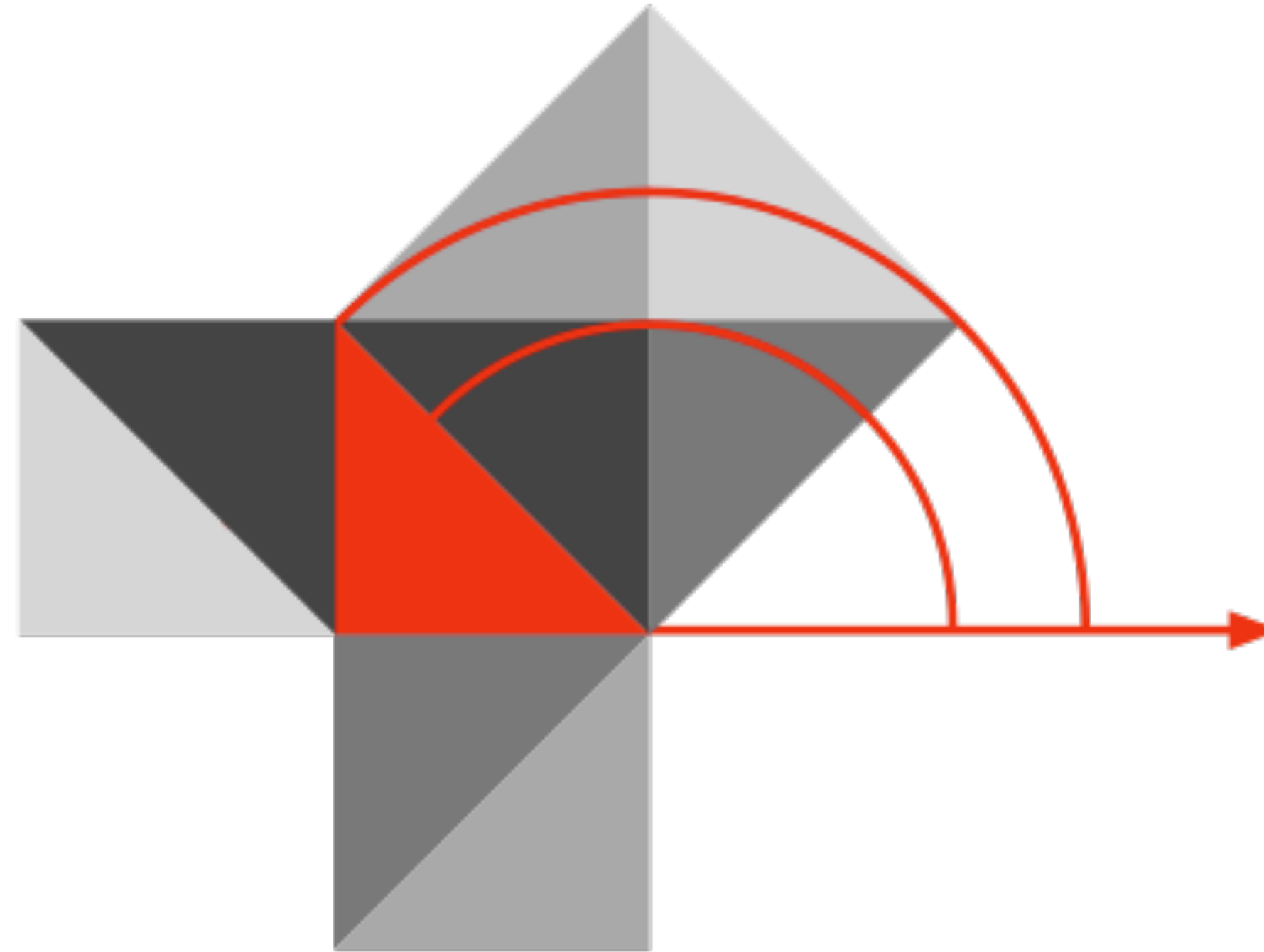
## Substitution

*Tech acts as a direct tool substitute, with no functional change*



# Hippasus

---



Blog: <http://hippasus.com/rrpweblog/>

Email: [rubenrp@hippasus.com](mailto:rubenrp@hippasus.com)

Twitter: @rubenrp

This work is licensed under a Creative Commons Attribution-Noncommercial-Share Alike 3.0 License.

